

CRAWFORDSBURN VILLAGE BROW

Crawfordsburn



SITES 7-8

Computer visual.

SITES 7-8

GROUND FLOOR

Entrance Hall with separate WC

Lounge 19'8" x 11'10"

Kitchen / Dining 19'8" x 9'10" min

Utility 11'2" x 8'1"

FIRST FLOOR

Master Bedroom 14'5" x 9'10"

Ensuite 9'10" x 4'11"

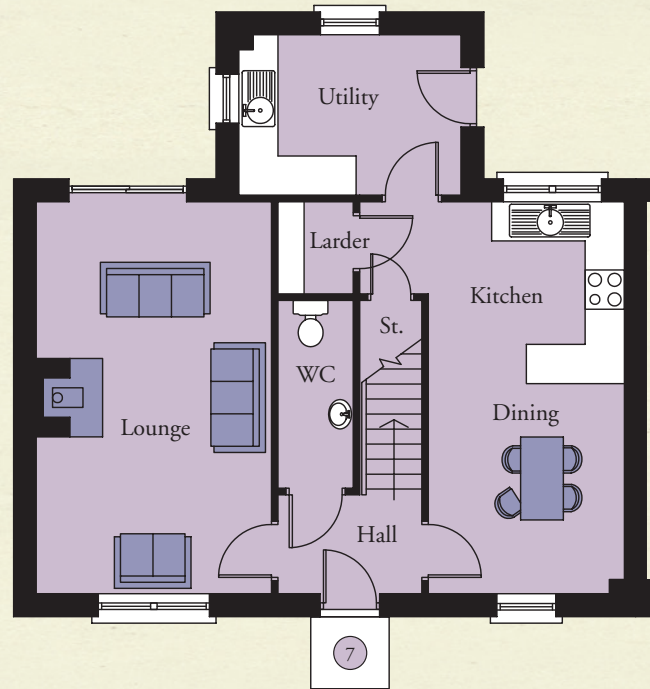
Bedroom 2 11'10" x 11'0"

Bedroom 3 11'10" x 8'5"

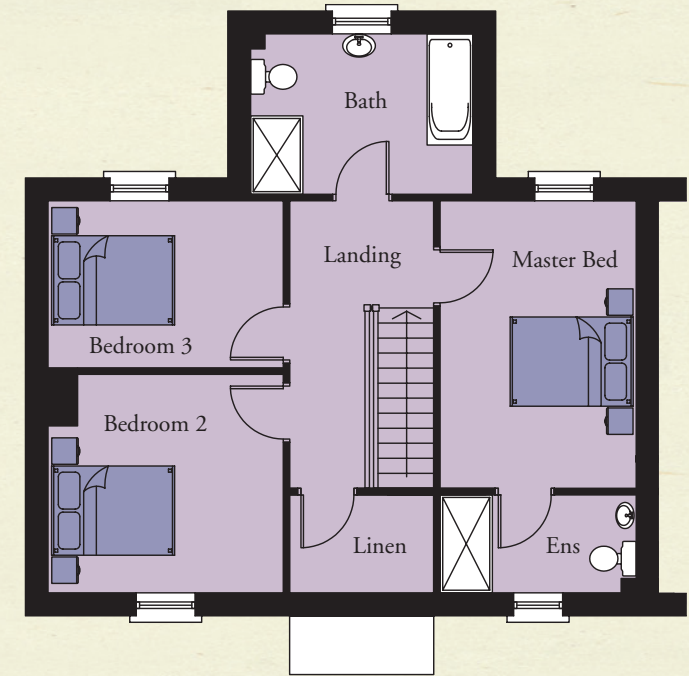
Bathroom 11'2" x 8'1"

Linen 7'3" x 4'11"

GROUND FLOOR

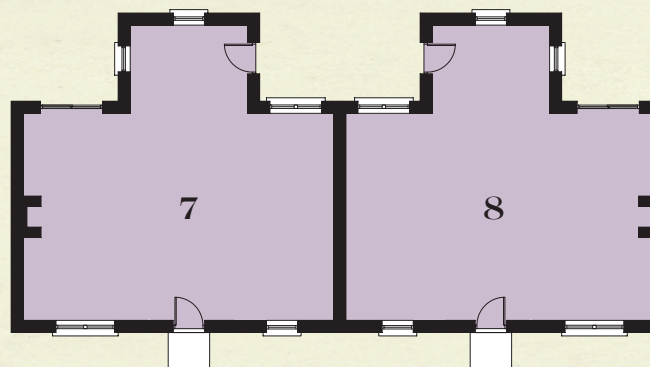


FIRST FLOOR



**TOTAL FLOOR AREA:
1350 SQ. FT. APPROX.**

KEY - SITES 7-8



NORTH DOWN
54 High Street
Holywood
Co Down
BT18 9AE

028 9042 4747

WWW.TEMPLETONROBINSON.COM



**CRAWFORDSBURN
VILLAGE BROW**

CGI computer visual is for illustrative purposes only. Floorplans are not to scale and all measurements are approximate.